



FOREST ESSENTIALS  
LUXURIOUS AYURVEDA

## ENCHANTED FOREST

### Festive Gifting Selection 2022

From the exquisitely designed wonders of nature, we bring to the fore the Enchanted Forest Experience, with a mystic touch of myth, legend, and folklore. As the moods of the day transition, the Enchanted Forest transforms itself into a series of impressions through the divine Apsaras, animals, and birds, who immerse themselves in effortless activity, depicted in the various illustrations of the transformative forest.



## BAHAAR : SPRING

This artwork depicts an enchanting Chital Deer looking up at the moonlit sky, in boundless admiration. The flowers are in full bloom and add vibrancy to the twilight landscape. “Bahaar” in Hindi translates to “Blossom” or “Spring”. This is also a classical raga that is traditionally performed at night time.

Luxury Sugar Soap Bitter Orange & Cinnamon  
Ultra-Rich Body Milk Mashobra Honey & Vanilla  
Delicate Facial Cleanser Kashmiri Saffron & Neem  
Luscious Lip Balm Narangi Glaze

70 g  
50 ml  
50 ml  
4 g

**MRP : INR 1,895/-**

CODE : 15686  
Box Dimensions :  
L 14.2 cm X W 16.5 cm X H 4 cm





## RASAYAN SHASHTRA

This artwork captures two Apsaras or Celestial Maidens brewing a mix of herbs, roots, leaves and flowers to prepare a traditional recipe. The preparation is considered rejuvenating for both the body and the mind. These Apsaras are using their knowledge of “Rasayan Shastra” or “Ancient Chemistry” in Sanskrit, to make this mix.

Facial Cleanser Mashobra Honey Lemon & Rosewater	50 ml
Luscious Lip Balm Sugared Rose Petal	4 g
Sunscreen Lotion Sandalwood & Aloe Vera	50 ml
Refining Facial Scrub Kashmiri Walnut Gel	15 g

MRP : INR 1,995/-

CODE : 15688

Box Dimensions :

L 18.5 cm X W 18.5 cm X H 6 cm





## GENTLEMAN'S SELECTION

This artwork depicts an enchanting Chital Deer looking up at the moonlit sky, in boundless admiration. The flowers are in full bloom and add vibrancy to the twilight landscape. "Bahaar" in Hindi translates to "Blossom" or "Spring".

This is also a classical raga that is traditionally performed at night time.

---

Face Wash Sandalwood & Orange Peel	50 ml
After Shave Sandalwood & Orange Peel	50 ml
Facial Moisturiser Sandalwood & Orange Peel	50 ml

---

**MRP : INR 1,850/-**

CODE : 15685

Box Dimensions :

L 14.2 cm X W 16.5 cm X H 4 cm





## ABHYARANYA : SANCTUARY

This artwork showcases a sanctuary visited by animals and birds around a watering hole in an enchanted forest. It captures a deer drinking water from the pond and a monkey climbing a tree. We can also spot various brightly coloured birds.

### Content 1

Facial Cleanser Honey, Lemon & Rosewater	130 ml
Facial Tonic Mist Pure Rosewater	130 ml

### Content 2

Silkening Shower Wash Oudh & Green Tea	130 ml
Ultra Rich Body Milk Oudh & Green Tea	130 ml

Content 1  
MRP : INR  
2,450/-

Content 2  
MRP : INR  
2,350/-

Box Dimensions :  
L 23 cm X W 14 cm X H 5.5 cm



## SHRINGAAR

This artwork captures two Apsaras or Celestial Maidens lovingly adorning each other under an enchanted tree surrounded by flowers, observed by a curious peacock. Inspired by one of the Nine Rasas or “Emotional States” of Sanskrit Literature, the “Shringaar Rasa” or the “Emotion of Love” is the most famous and is considered to be the supreme emotion.

---

Facial Cleaner Honey , Lemon & Rosewater	50 ml
Silkening Shower Wash Indian Rose Absolute	50 ml
Body Mist Rose & Cardamom	50 ml
Ultra Rich Body Milk Indian Rose Absolute	50 ml
Ayurvedic Head Massage Oil Bhringraj	50 ml

---

**MRP : INR 2,750/-**

Box Dimensions :  
L 22 cm X W 29 cm X H 8.5 cm



## VAN VATIKA

This artwork depicts a glimpse into nature's bounty - a voluptuous garden in the forest with Orange, Pomegranate, Mango, Jamun and Banana Trees, all heavy with fruit - ripe for picking and full of intoxicating nectar.

"Van Vatika" in hindi translates to "a garden in the forest."

---

Silkening Shower Wash Mashobra Honey & Vanilla	50 ml
After Bath Oil Mashobra Honey & Vanilla	50 ml
Ultra -Rich Body Milk Mashobra Honey & Vanilla	50 ml
Facial Cleanser Mashobra Honey Lemon & Rosewater	50 ml
Hair Cleanser Amla Honey & Mulethi	50 ml
Hair Conditioner Amla Honey & Mulethi	50 ml

---

MRP : INR 2,500/-

CODE : 15690

Box Dimensions :

L 13.5 cm X W 27.5 cm X H 4.5 cm





## PAKSHISHAL : AVIARY

The artwork shows an aviary of birds in the enchanted forest. Birds serve as symbols of good luck, good health, wealth, fertility, love, truthfulness and many other things in hundreds of different cultures all over the world.

---

Delicate Facial Cleanser Kashmiri Saffron & Neem	50 ml
Facial Tonic Mist Panchpushp	50 ml
Sun Fluid with SPF 50++	15 ml
Hand Pounded Organic Facial Scrub	15 g
Night Treatment Cream Jasmine & Patchouli	15 g
Luscious Lip Balm Narangi Glaze	4 g

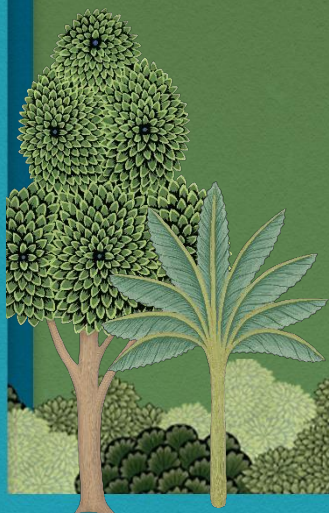
---

**MRP : INR 2,995/-**

CODE : 15683

Box Dimensions :

L 17.4 cm X W 17.4 cm X H 4.5 cm





## VANYAKSETRAM : WILDERNESS

This captures the wilderness in an enchanted forest where various animals and birds live in harmony with nature. The artwork shows the royal Bengal tiger, cheetah and spotted deer along with rare birds. It represents the delicate balance of nature where every animal, bird, and tree play their part in maintaining harmony and sustaining life.

Delicate Facial Cleanser Mashobra Honey, Lemon & Rosewater  
 Hair Cleanser Amla, Honey & Mulethi  
 Silkening Shower Wash Mashobra Honey & Vanilla

130 ml

130 ml

130 ml

**MRP : INR 3,295/-**

Box Dimensions :  
 L 22.5 cm X W 24 cm X H 7.5 cm





## SNANA

This artwork depicts two Apsaras or Celestial Maidens bathing in a pool of water at dawn, purifying themselves and offering tribute to the river goddesses. The act of bathing or “Snana” is a sacred ritual often associated with purification and new beginnings.

---

Facial Cleanser Honey, Lemon & Rosewater	130 ml
Facial Tonic Mist Pure Rosewater	130 ml
Silkening Shower Wash Nargis	130 ml
Ultra Rich Body Milk Nargis	130 ml

---

**MRP : INR 4,575.00**

CODE : 15679

Box Dimensions :

L 22.2 cm X W 29 cm X H 8.5 cm



## CHANDRA VAN

This artwork depicts majestic snow leopards meandering in a surreal forest, with Koyal birds perched on lush palm trees under a full moon sky.

"Chandra Van" in Hindi translates to "Night Forest."

### Content 1

Ultra- Rich Body Milk Mashobra Honey & Vanilla	130 ml
Body Mist Honey & Vanilla	130 ml
Silkening Shower Wash Mashobra Honey & Vanilla	130 ml

### Content 2

Velvet Silk Body Cream Nargis	100 g
Ultra Rich Body Milk Nargis	130 ml
Body Polisher Nargis With Sea Salt Crystals	100 g
Silkening Shower Wash Nargis	130 ml

Content 1  
**MRP : INR**  
4,975/-

CODE : 15681

Content 2  
**MRP : INR**  
4,495/-

CODE : 15682

Box Dimensions :  
L 22.5 cm X W 24 cm X H 7.5 cm



## VANYAKSETRAM : WILDERNESS

This captures the wilderness in an enchanted forest where various animals and birds live in harmony with nature. The artwork shows the royal Bengal tiger, cheetah and spotted deer along with rare birds. It represents the delicate balance of nature where every animal, bird, and tree play their part in maintaining harmony and sustaining life.

---

Delicate Facial Cleanser Mashobra Honey, Lemon & Rosewater	130ml
Facial Tonic Mist Pure Rosewater	130ml
Radiance Beauty Emulsion Tejasvi	15 g
Deeply Nourishing Facial Cleansing Paste	15 g

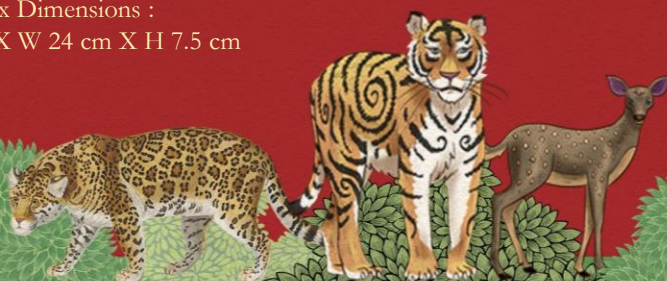
---

**MRP : INR 4,475/-**

CODE : 15680

Box Dimensions :

L 22.5 cm X W 24 cm X H 7.5 cm





## THE GENTLEMAN'S COLLECTIONS

Our collection of men's facial products has everything a discerning man would need for a comfortable grooming experience. It is infused with a blend of sensuous Sandalwood Oil and tangy Orange Peel that is designed to leave your skin lightly scented and refreshed, all day long with protection from sun damage.

---

Facial Cleanser Sandalwood & Orange Peel	130 ml
After Shave Spray Sandalwood & Orange Peel	100 ml
Shaving Cream Sandalwood & Orange Peel	60 g
Replenishing Facial Moisturiser Sandalwood & Orange Peel	130 ml
Wooden Shaving Brush	1 pc

---

**MRP : INR 5,495/-**

CODE : 15684

Box Dimensions :

L 20 cm X W 21 cm X H 5.5 cm





## SHRINGAAR

This artwork captures two Apsaras or Celestial Maidens lovingly adorning each other under an enchanted tree surrounded by flowers, observed by a curious peacock. Inspired by one of the Nine Rasas or “Emotional States” of Sanskrit Literature, the “Shringaar Rasa” or the “Emotion of Love” is the most famous and is considered to be the supreme emotion.

---

Light Hydrating Facial Gel Pure Rosewater	15 g
Facial Tonic Mist Pure Rosewater	130 ml
Delicate Facial Cleanser Mashobra Honey, Lemon & Rosewater	130 ml
Tinted Lip Serum Jamun Rasa	2.2 g
Check Tint Noor Nikhar Gulabi	10 ml
Nayantara Clear Lash & Brow Serum	8.5ml

---

**MRP : INR 6,500/-**

CODE : 15677

Box Dimensions :

L 22 cm X W 29 cm X H 8.5 cm



## MALHAR

This artwork captures an Apsara and a Gandharva imploring Lord Indra - the God of Rain - by playing their musical instruments to ask for the monsoon. Surrounded by dancing peacocks who lend their voice to the performance, the skies go dark with rain laden clouds only to be brightened by flashes of lightening.

---

Silkening Shower Wash Oudh & Green Tea	130 ml
Ultra -Rich Body Milk Oudh & Green Tea	130 ml
Body Mist Oudh & Green Tea	130 ml
Velvet Silk Body Cream Oudh & Green Tea	100 gm
Luxury Sugar Soap Oudh & Green Tea	125 gm

---

MRP : INR 6,750/-

CODE : 15678

Box Dimensions :

L 22 cm X W 29 cm X H 8.5 cm





## JAL MAHAL

This artwork depicts a palace standing majestically on a still lake full of water lilies, against a glimmering night sky full of stars. It's only inhabitants -the parrots and peacocks supposedly sing songs of unrequited love which echo through the night. "Jal Mahal" in Hindi translates to "The Palace of Water."

Soundarya Radiance Cream With 24K Gold & SPF25	15 g
Transformative Soundarya Night Cream	15 g
Facial Ubtan Soundarya	40 g
Illuminating Silk Soap Soundarya	100 g
Beauty Body Oil Soundarya with Shimmer	130 ml
Silkening Shower Wash Soundarya	130 ml
Soundarya Ultra-Rich Body Milk	130 ml

**MRP : INR 11,000/-**

CODE : 15676

Box Dimensions :

L 34 cm X W 26 cm X H 8 cm





THANK YOU